

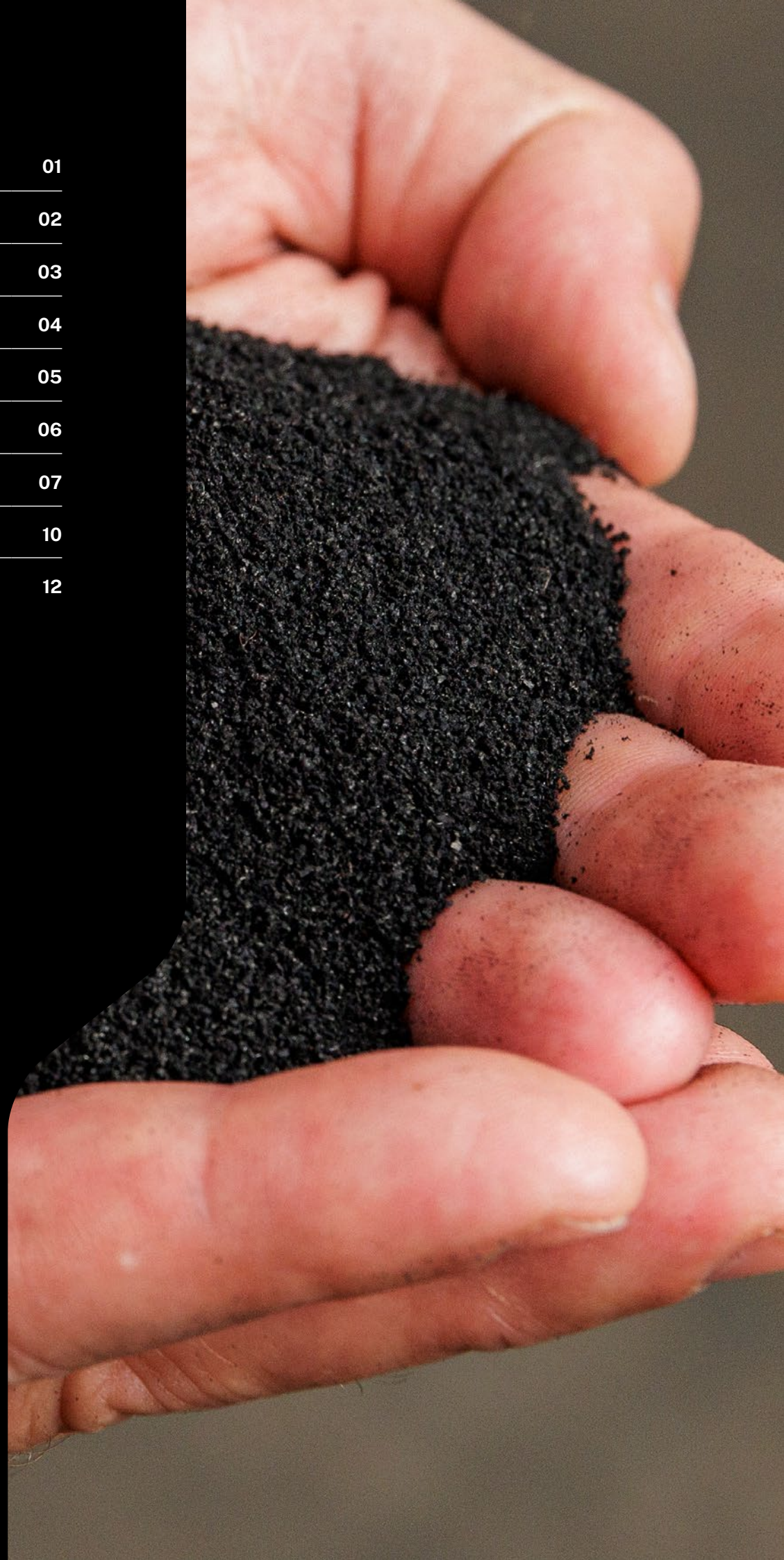


Capability Statement Off the Road Tyre Recycling

A ResourceCo Company

Contents

About Tyrecycle	01
Recycling leader	02
Coverage	03
Our process	04
Our products	05
Partner	06
Off the road tyres	07
Mining tyres	10
The solution	12



Global Leader & trusted partner

Tyrecycle is an integral part of the ResourceCo Group, a leader throughout Australia's resource recovery industry. We're leaders amongst key industry peak bodies and pride ourselves on maintaining environmental, quality and safety accreditations for our operations.



Tyrecycle, Australia's largest collector and recycler of tyres, is investing in world-leading infrastructure at strategic locations throughout the country in our endeavour deliver sustainable outcomes for end-of-life off the road (OTR) mining tyres.

Our expanding OTR tyre recycling capability adds to our nation-wide network of collection services and recycling facilities, where we recycle in the order of 20 million tyres each year. When considering the magnitude of recycling Australia's OTR tyres, Tyrecycle's experience, infrastructure, investments, national coverage and market presence positions us the standout service provider for the sustainable management of OTR mining tyres.

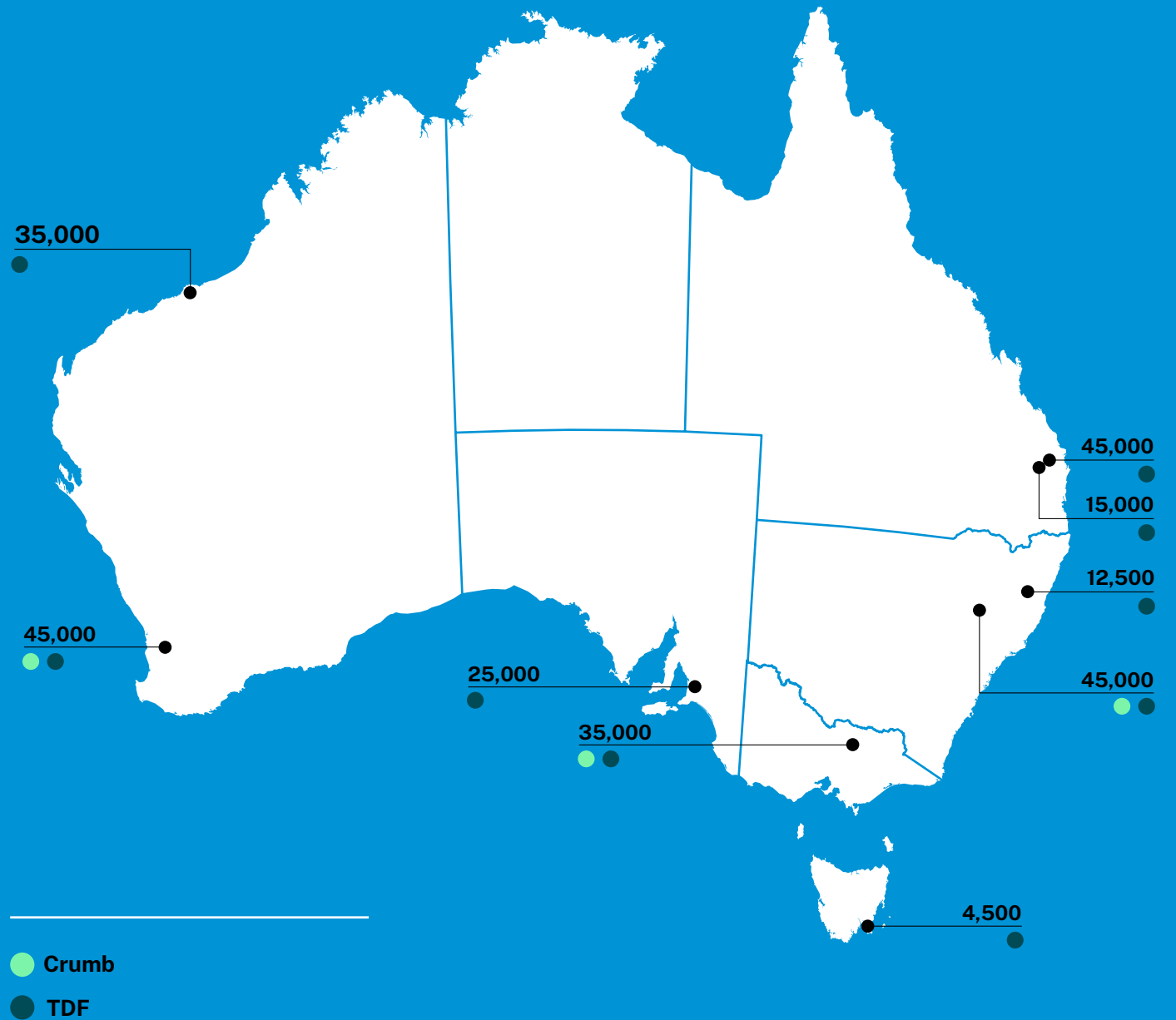
Our recycling rate performance of 99% is best-in-class, it's a result of our commitment to maximising the potential of every tyre, strenuous R&D and a continuous improvement program across our operations. Throughout our 30 years Tyrecycle has established and unrivalled material traceability and chain of custody service as we work closely with our feedstock partners to provide the piece of mind that their 'waste' isn't being wasted.

\$50m
investment over
the past 5 years

03
rubber crumb
facilities across
Australia

30,000
tonnes of
crumb output

20,000,000
Tyres recycled
per annum



National footprint

Tyrecycle operates over \$150 million in recycling capital throughout Australia.

Our growth continual improvement and investment program is aimed at increasing our tyre recycling capability and capacity as markets develop (just as OTR recycling), along with strengthening our our position in existing markets.

Throughout our 30 years, Tyrecycle has established and unrivalled material traceability and chain of custody service as we work closely with our feedstock partners to provide the piece of mind that their 'waste' isn't being wasted.

Carbon Benefit
Independent analysis has verified the very real CO₂-e benefits of using rubber crumb in roads as well as the consumption of TDF as an alternate fuel source. While these benefits are considered in terms of the tyre derived product consumer, Tyrecycle can offer up-chain reporting for our partners who can share in claiming the positive impact by recycling their end-of-life tyres.

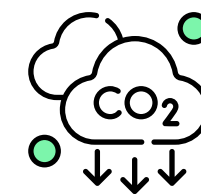
Our products

Crumb and Granules

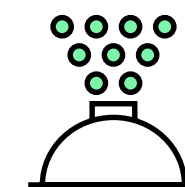
Recycled rubber crumb and granules are used in a wide range of applications, including in tile adhesives, playgrounds and sporting fields and most widely used in construction and resurfacing of roads. Used as a binder with bitumen, and applied via hot-mix or seal spray, our rubber crumb enhancing road performance, significantly reducing road noise and extending the life of our roads by making them more durable and sustainable.

TDF

Our Tyre Derived Fuel (TDF) is an alternate fuel source used by high energy consumers throughout north and South Asia. TDF displaces the use of fossil fuels such as coal and gas thereby provides our customers with important reduction in greenhouse gas emissions.



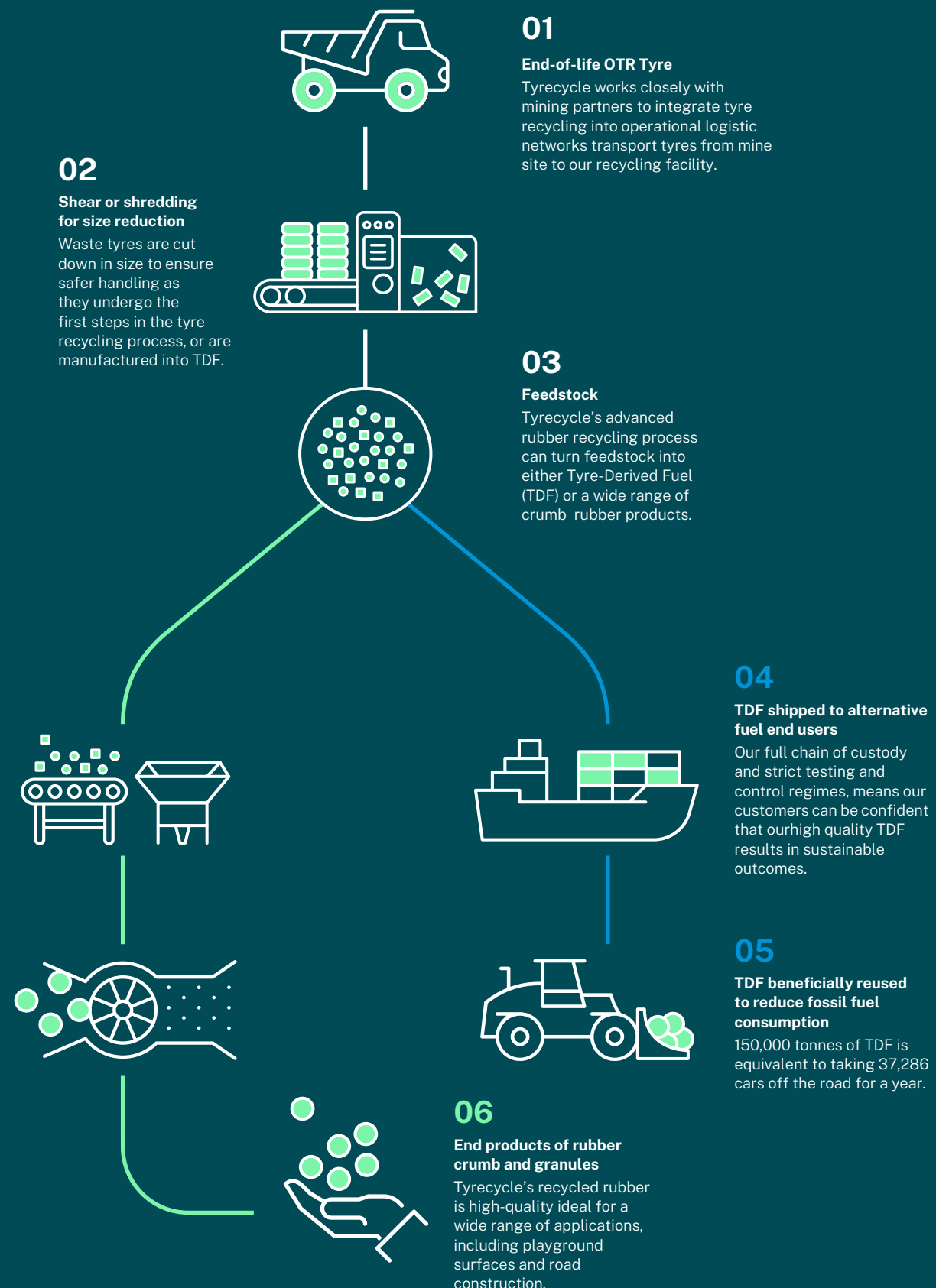
Every tonne of crumb rubber used in asphalt mixes represents a greenhouse gas saving of 2,463 kg CO₂-e.



Every tonne of crumb rubber in spray seal represents a greenhouse gas saving of over 596 kg CO₂-e.



Every tonne of TDF used as a substitute for brown coal represents a greenhouse gas saving of 234 kg CO₂-e.



- Crumb and granule production
- TDF production



Drainage aggregates



Road Surface



Tyre-Derived Fuel (TDF)



Break Pads



Sporting, Playground and soft fall surfaces



Partner with confidence

Like OTR mining tyres, the generation of end-of-life commercial and passenger tyres is continuous.

It's a concept well known to us at Tyrecycle, and through our long-term agreements with Australia's largest retailers and disposers of end-of-life tyres, we're entrusted to continually collect and recycle their end-of-life tyres – it's a non-stop service they depend on. The same applies to our long term offtake partners who depend on a continual supply of high quality products.

Both sides of our supply and offtake operations depend on high-quality production processes. Our expanding network of tyre recycling facilities includes internationally recognised best-in-class equipment, enabling us to offer our partners the piece of mind that our operations function seamlessly without disruption.

Chain of Custody

Tyrecycle's full chain of custody reporting capability gives our customers the assurance that the materials they are disposing, or products they are buying, have been dealt with in an environmentally sound manner.

With strict documentation and process controls, Tyrecycle can supply reports supporting the end destinations of its products, whether that be rubber crumb or TDF.

We track waste movement data, and continuously seek best practice to improve efficiency while meeting regulatory requirements.



Off the road tyres

Australia's largest tyre recycler is focussed on delivering sustainable outcomes for Australia's largest tyres.

Our versatile approach to product production capability includes the ability to pivot our operations to meet the needs of our customers. We're the leading manufacturer and supplier of crumb rubber into Australia's road infrastructure and the largest exporter of manufactured-to-specification TDF into international markets where we're helping our clients meet their strict emissions targets.

Changes to end-of-life OTR tyre management

Australia's Environment Ministers are focussing on the fate of end-of-life tyres.

The Federal Environment Minister has placed tyre recycling on the Minister's product stewardship priority list and has flagged mandated regulation-if market-led recycling does not increase recycling rates.

OTR and surface mining tyre recycling rates are significantly the lowest of all tyres in Australia, undoubtedly regulators are sharply focused on improving recycling outcomes for this part of the industry. Tyrecycle presents the mining industry with a pathway to leverage our extensive experience for the sustainable management of end-of-life OTR tyres.

Australia's OTR Tyres

Across Australia 130,000 tonnes of off-the-road tyres reach their end of life each year.

Three State's account for 89% of Australia's OTR tyre waste generation every year. In 2021-22 Western Australia was the leading jurisdiction generating 50,380 tonnes of end of life OTR tyres, 37% of the national total. Queensland was a close second, generating 46,330 tonnes (34%), followed by NSW with 24,630 tonnes (18% of the national total).

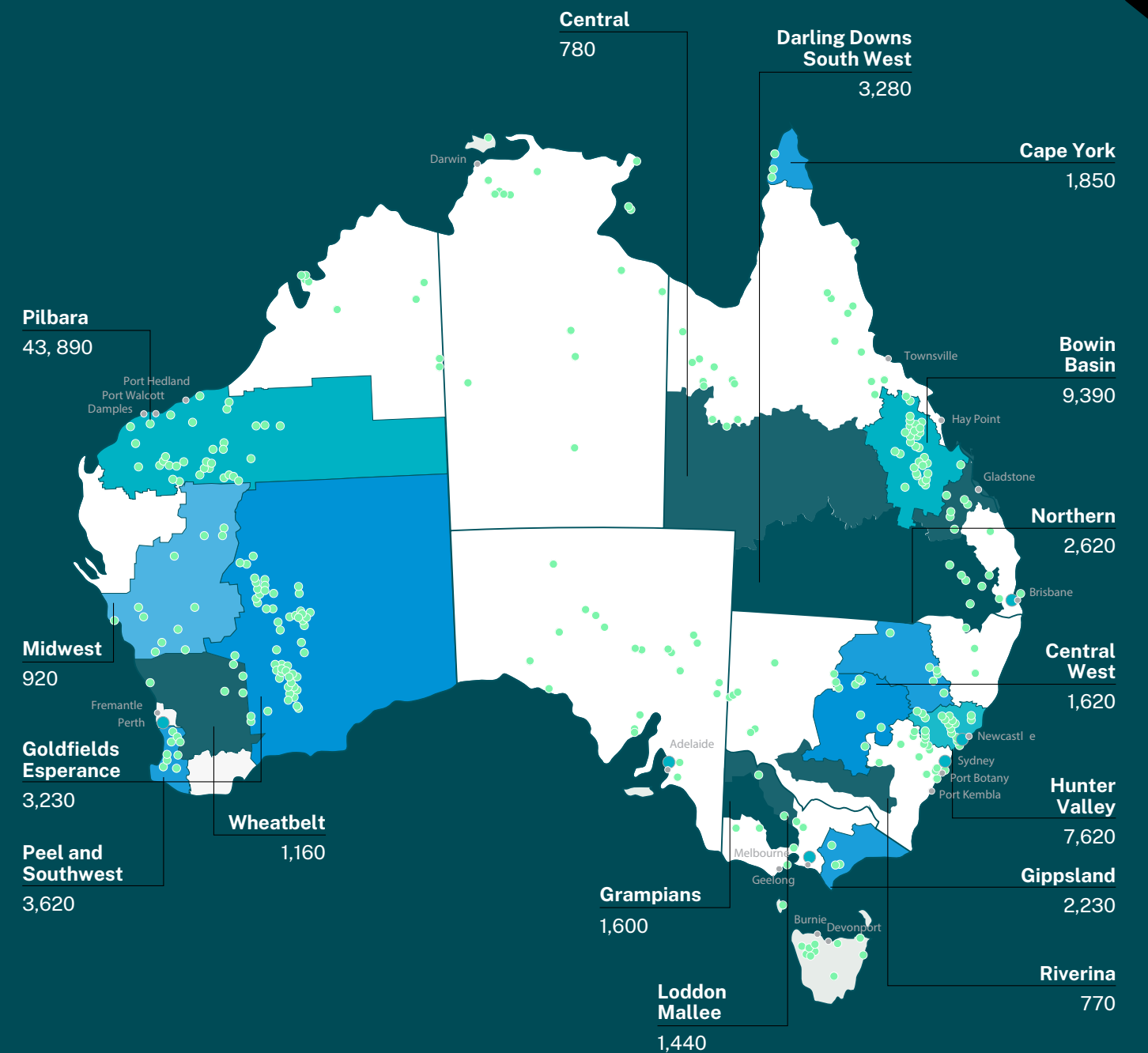
Top 3 OTR generating catchments as a proportion of Australia's top 11 catchments

49%
Pilbara

12%
Hunter & Nthn NSW

11%
Bowen Basin

Only around 10% OTR tyres are recovered.



- Operating Mines
- Processing Hubs
- Major Ports

*Source: Tyre Stewardship Australia, 2023

‘Off the road tyres is a significant issue for Western Australia, and Western Australia is leading national efforts to see how we can improve the situation in terms of recovery so more of those tyres on site are getting into this facility’, Hon. Reece Whitby MLA, Minister for Environment (WA) at the opening of Tyrecycle’s new Perth recycling facility in May 2024.

Tyrecycle’s OTR solution

Tyrecycle is investing in strategic locations and world-leading infrastructure to efficiently and sustainably recycle OTR tyres.

We’re investing today, for more sustainable outcomes of Australia’s OTR tyres tomorrow. Tyrecycle’s East Rockingham tyre recycling facility, 40km south of Perth, is not only Australia’s largest and most flexible tyre recycling site, it’s also an integral part in our integrated network that will deliver never-before-seen OTR tyre capabilities. East Rockingham will work together with our new Pt Hedland site, which in it’s own right will be Australia’s first OTR tyre recycling facility, bringing new recycling solutions to the mining industry.

East Rockingham Plant

In May 2024 Tyrecycle officially opened its latest state-of-the-art facility in East Rockingham, Perth.

Situated 40 kilometres from Perth, this facility marks a significant advancement in waste tyre processing on a national scale.

The \$15 million-dollar plant, boasts a processing capacity of 40,000 tonnes of end-of-life tyres per annum, importantly it is capable of producing 7,000 tonnes of rubber crumb – a growing market in Western Australia.

The East Rockingham facility represents a vital step towards addressing the growing challenge of Australia’s off the road tyre waste. The East Rockingham plant will function as a secondary processing plant to Tyrecycle’s planned Port Hedland OTR tyre recycling operations. The East Rockingham facility will be used to further refine the primary processing undertaken at Port Hedland, meaning Australia’s OTR mining tyres can very well live on as rubber crumb throughout our road network, or as an alternate fuel source reducing greenhouse gas emissions by displacing coal or gas consumption.

40,000+
tonne per annum
processing
capacity

7,000
tonne per annum
rubber crumb
production

Largest
tyre recycling
facility in Australia



Scan the
QR code to
learn more



Pilbara plant

Tyrecycle's Pt Hedland operations will be Australia's first OTR mining truck tyre recycling facility.

Using best-in-class bespoke equipment our strategically located operations will, for the first time, offer the mining sector an economical solution to the sustainable management of end of tyre OTR tyres.

Tyrecycle has chosen to partner with the internationally renowned equipment manufacturer Salvadori as the supplier of our OTR tyre recycling plant. Installed throughout 40 countries, Salvadori's equipment is trusted to recycle the world's largest tyres in facilities just like the one Tyrecycle is developing in the Pilbara.

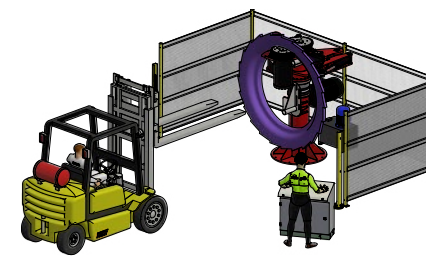
Tyrecycle is renowned for the safe and reliable collection of end-of-life tyres, enabling our customers to continue their operations, without the burden of tyre stockpiles. Our innovative tyre collection solutions translates to Australia's mining industry, where we'd leverage existing logistics routes and services near to our Pt Hedland and East Rockingham sites.



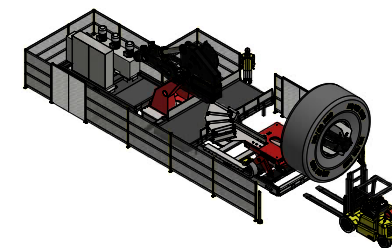
Scan the QR code to learn more about Salvadori: Wolverine



Scan the QR code to learn more about the MT-rex



Raptor OTR bead remover



MT-Rex OTR Shredder



30-56 Encore Avenue
Somerton VIC

1300 489 732

tyrecycle.com.au

